
بررسی آزمایشگاهی تثبیت خاک بستر راه کرمان-زنگی آباد با استفاده از

چهار ماده آهک،RRP، ZAM I و ZAM II

اورنگ فرزانه^{۱*} و عهدیه مصدق^۲

(/ / / /)

pH

RRP

()

°

CBR

ZAM II ZAM I

RRP

%

ZAM II ZAM I RRP

:

[]

(Styrene- Boutadiene)

(PVC)

(Synthetic Rubbers)

pH

Santoni

[]

)

(

()

() [] Gopal

(UF) Urea-Formaldehyde

UF

pH

kpa

CBR

pH

pH

ZAM II ZAM I

RRP

() [] Palmer

[]

(CaCl₂)

/

(MgCl₂)

()

()

() [] Vvedenka

(CL)

USCS

%

%

(

/

)

CBR

(

)

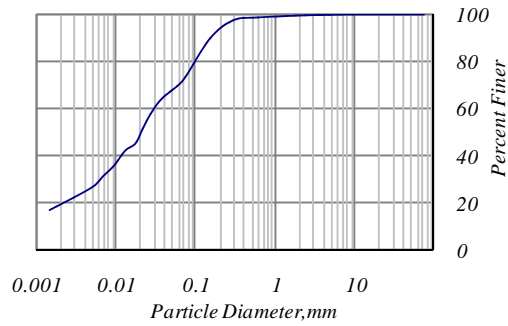
Tingle

()

CBR

pH

ASTMD-4318 ASTMD-698
 ASTMD-4546 ASTMD-4972 ASTMD-1883
 ASTMD-2974



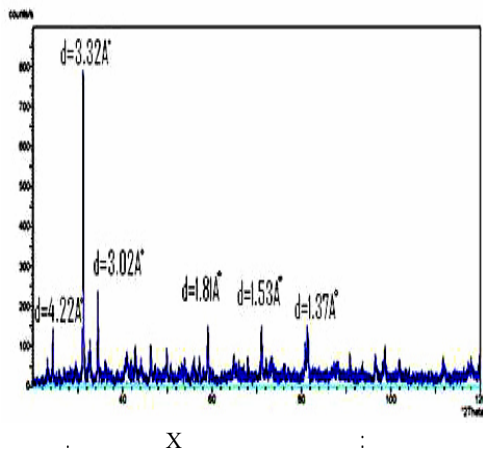
) X-RAY
 / (d) (

CO₂ MgO CaO

% % %
 %
 % /
 RRP

Soil classification(USCS)	CL
Specific weight, G _s	2.67
Liquid limit, w _L , (%)	22
Plastic limit, w _p , (%)	14
Plasticity index, PI, (%)	8
Optimum moistuer(%)	10.8
Maximum dry unit weight, (KN / m ³)	19.8
Organic content(%)	0.9
pH	7.6
CBR(uns soaked)	16
CBR(Soaked)	3

RRP
 RRP
 RRP
 ZAM II ZAM I



δ)
 ZAM ZAM I () ()
 II
 (Santoni

CBR

RRP

()

RRP

[]

%

%

CBR

)

CBR

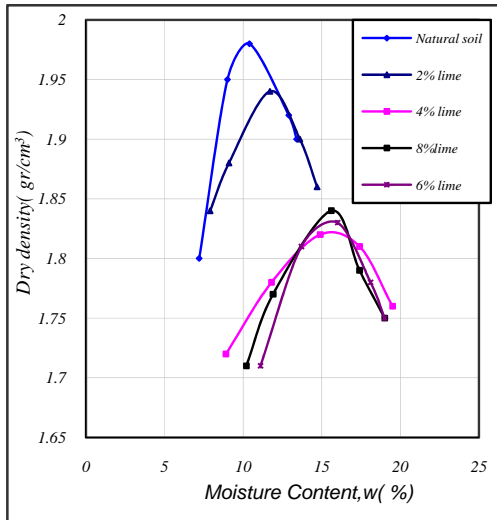
(

%

%

[]

%



)

(

RRP

/

/

/

/

RRP

[]

()

RRP

)

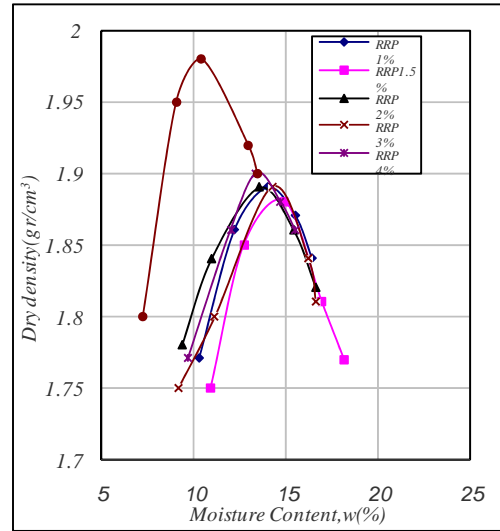
(

RRP

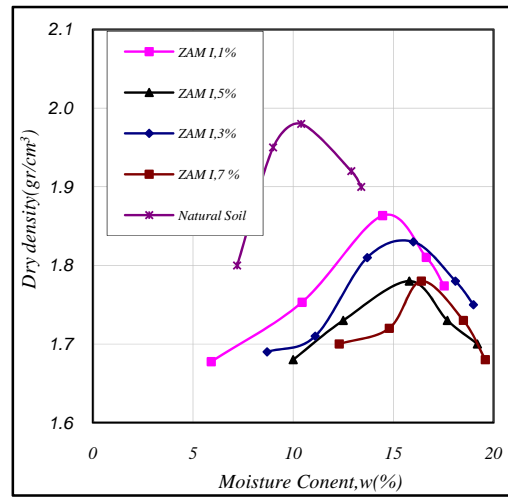
() ()

RRP

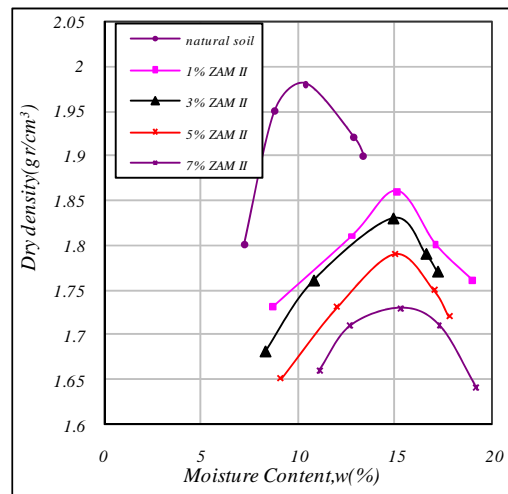
ZAM II ZAM I



.RRP



ZAM I



.ZAM II

%

RRP

pH

[]

pH

pH

/

pH

%

pH

/

/

pH

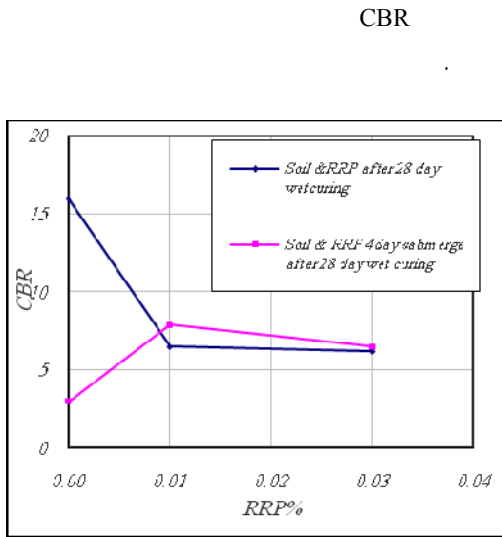
[]

pH

)

(

CBR
 ()
 % CBR
 /
 %
 RRP
 %



CBR RRP :

()

RRP CBR

(CBR)

RRP

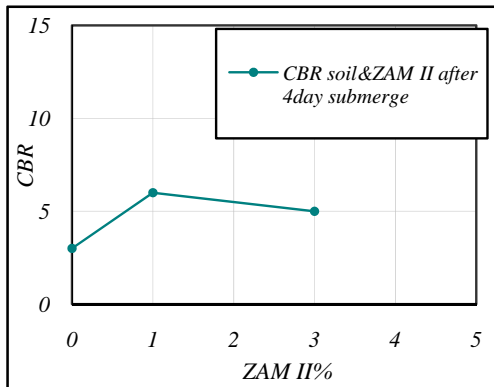
%
 /
 % /
 RRP
 ZAM I
 ZAM II
 CBR

CBR

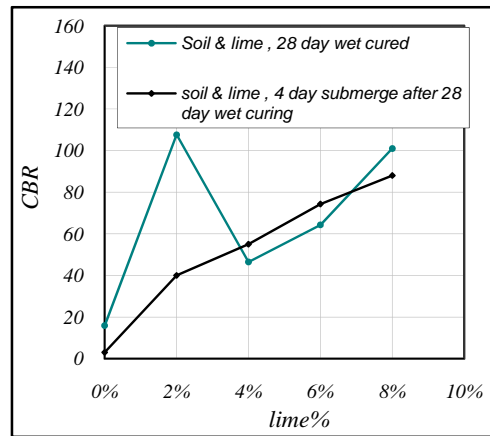
()

CBR

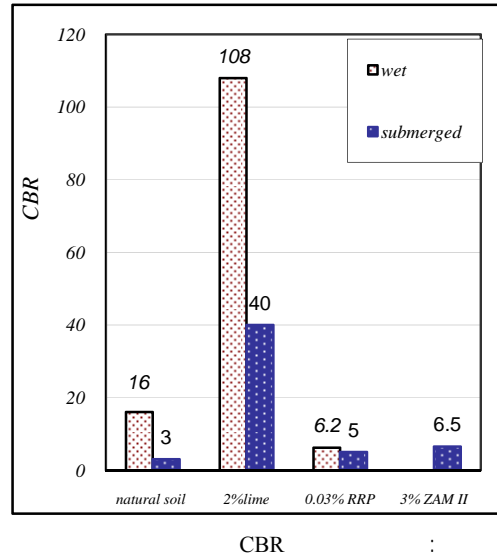
CBR



CBR ZAM II :



CBR :



CBR
)
(CBR
()

()
%

()

()
RRP

()

RRP /

KN/m^2

KN/m^2

() ()

ZAM I%

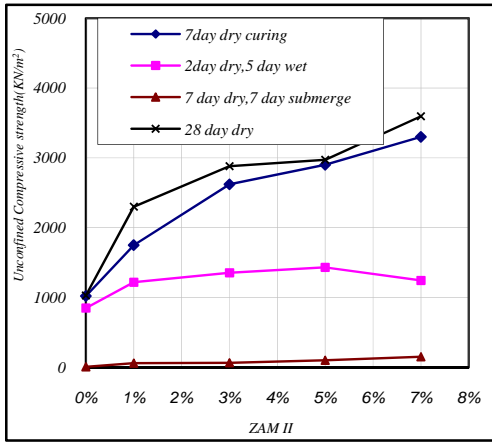
KN/m^2

KN/m^2

KN/m^2

()

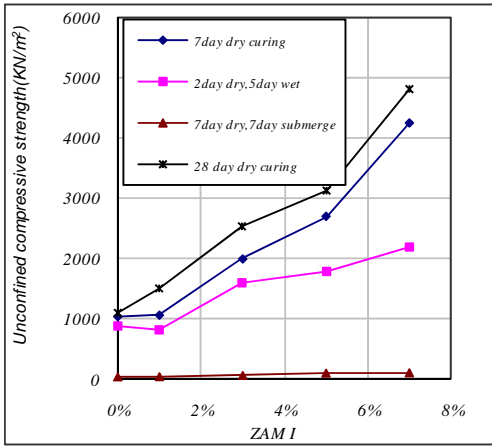
CBR ZAM II
()
CBR
CBR
CBR
ZAM II % RRP / %



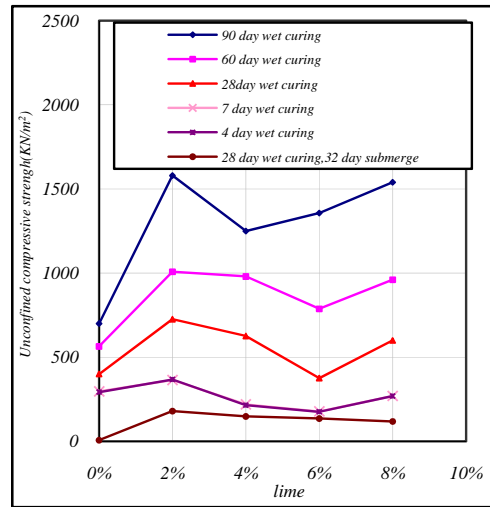
ZAM I %
 KN / m^2
 KN / m^2

ZAM II ZAM I

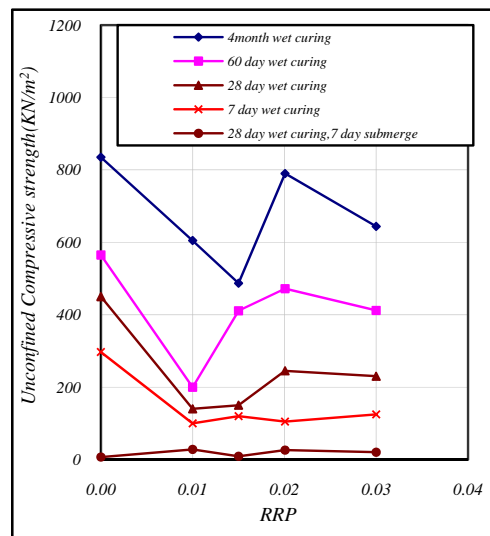
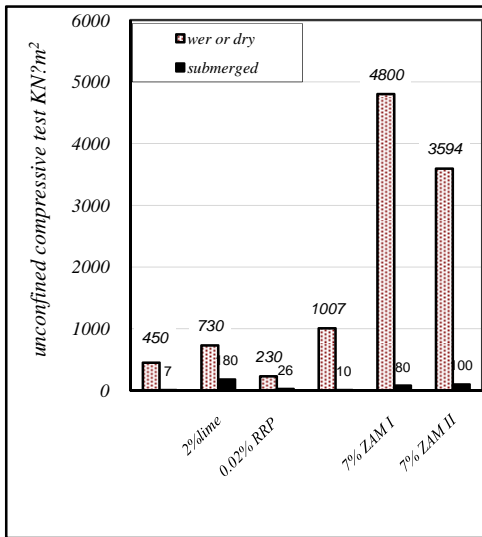
()
 % RRP / %
 ZAM II



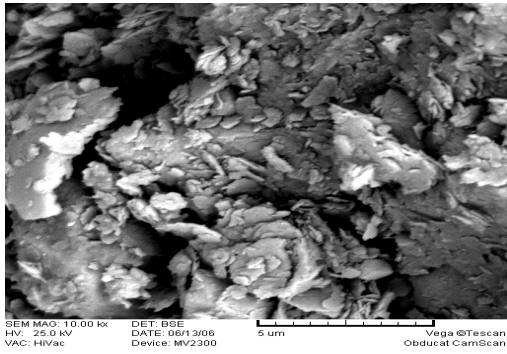
ZAM I



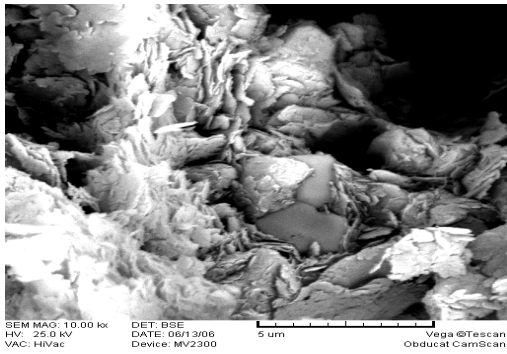
ZAM II



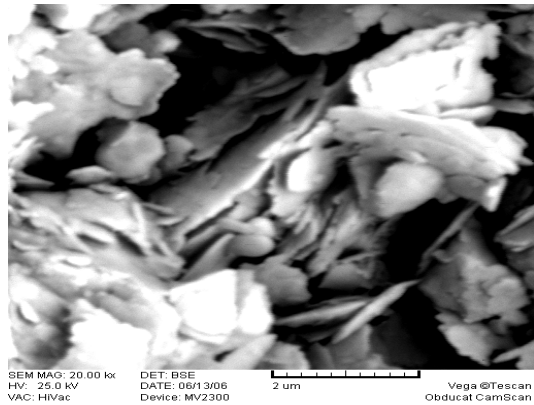
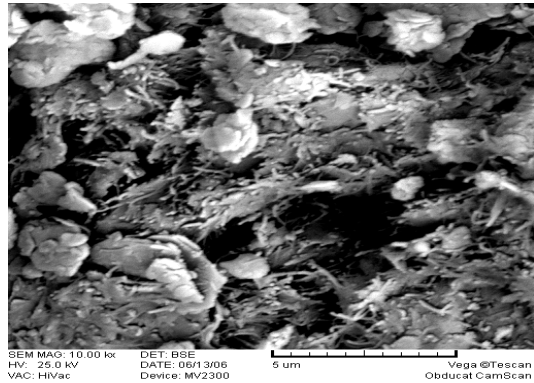
RRP



ZAM II %

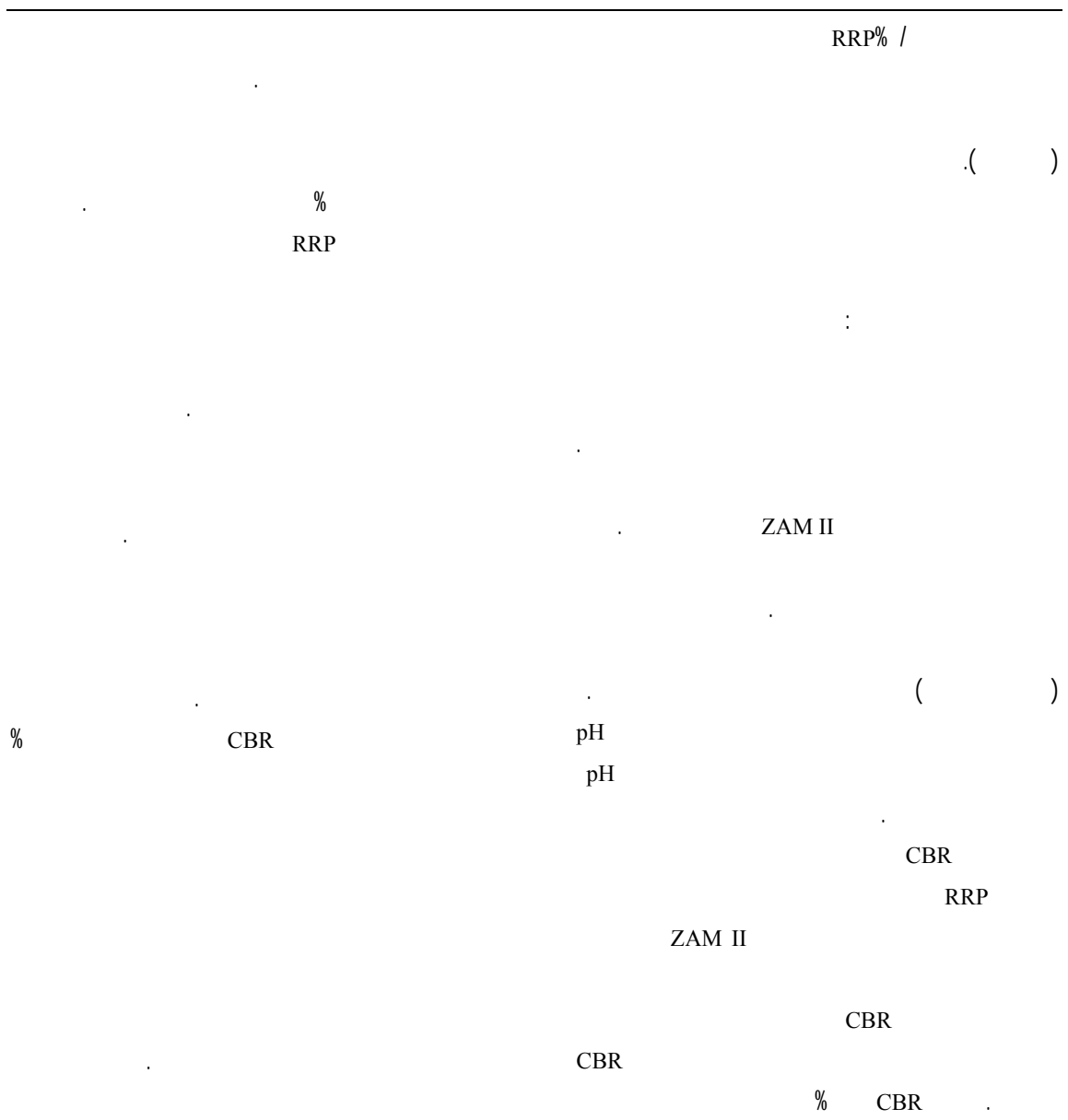


RRP % /



ZAM II %

%



1 - Guide Technique (2000). *Traitement des Sols à la chaux et / ou Liants Hydraliques*, editor-LCPC-SETRA

2 - Santoni, R. L., Tingle, J. S. and Webster, SL. (2003). "Stabilization of Silty Sand with Non-traditional Additives." *Transportation Research Record 1787*, TRB, National Research Council, Washington, DC, PP. 33-41.

3 - Mosadegh, A. (2007). *Experimental analysis to evaluate the effectiveness of Lime and Three new developed materials on subgrade soil stabilization of Kerman-Zangiabad road*, M.S thesis, University of Tehran (in persian)

4 - Chritopher M. Geiman, (2005). *Stabilization of Soft Clay Soft Clay Subgrades in Virginia Phase I Laboratory Study*, M.S thesis, Department of Civil Engineering ,Faculty of the Virginia Polytechnic Institute.

-
- 5 - Sherwood, P. T. (1993). *Soil Stabilisation with Cement and Lime*. State-of-the-Art Review, published by HMSO.
 - 6 - Eades, J. L. and Grim, R. E. (1966). *A Quick Test to determine Lime Requirements for Soil Stabilization*. *Highway Research 139*, High research Board, Washington Dc.
 - 7 - Mohamed, A. M. O. (2000). "The role of clay minerals in marly soils on its stability." *Engineering Geology*, Vol. 57 ,PP. 193-203
 - 8 - Wang, L. (2002). Cementitious stabilization of soils in the presence of sulphate.

ZAM II ZAM I

- 2 - Eades
 - 3 - Grim
-