

---

\*

( II II , III )

( )  
)

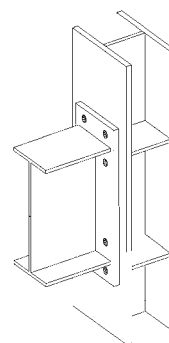
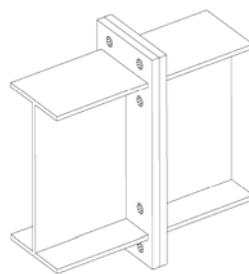
(

:

)

.(

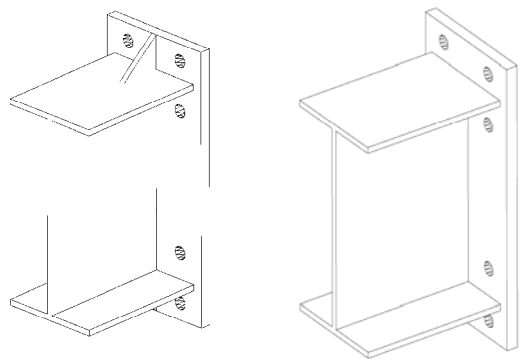
.( )





[ ]

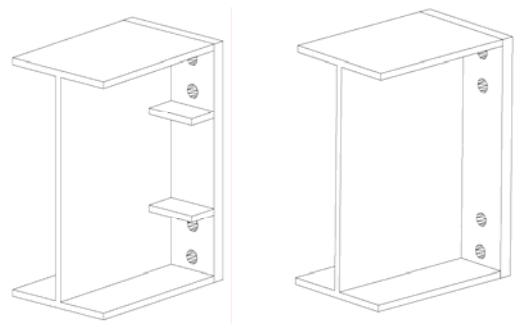
[ ]



:

[ ]

[ ]



:

ANSYS

[ ]

ABAQUS

[ ]

[ ]

ANSYS

[ ]

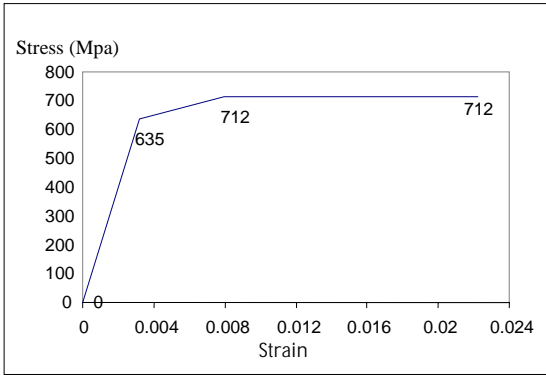


[ ]

%

( ) ( )

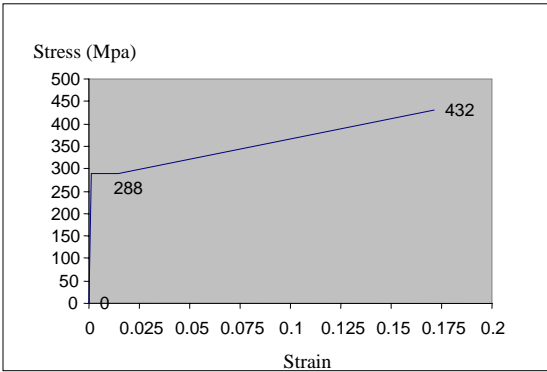
( ) ( ) ( )



ABAQUS

)

(ct1b6  
(ct1a1)



(C3D8I)

C3D8I

ASTM A36

ASTM A325

)

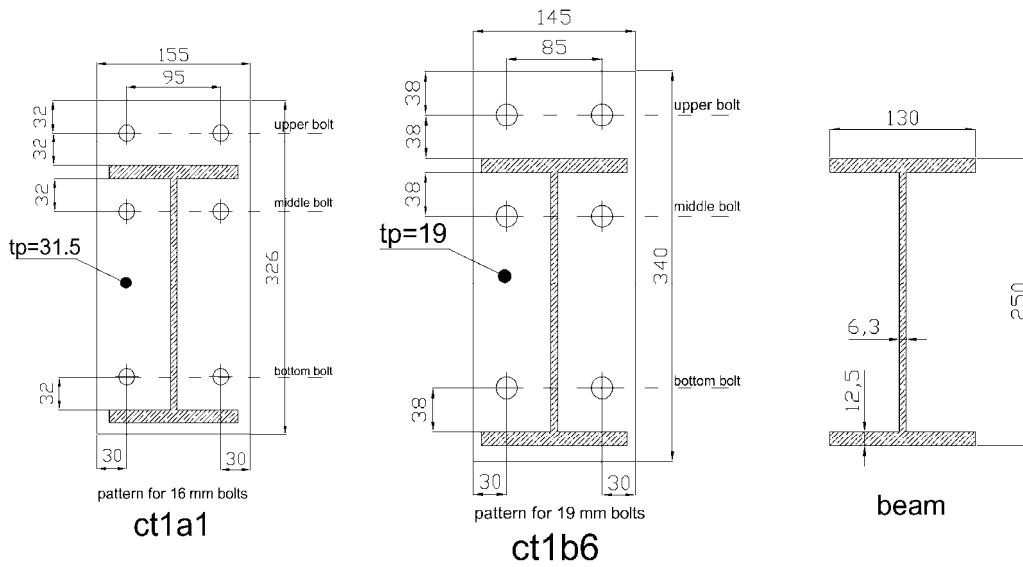
(

[ ]

/

(

)

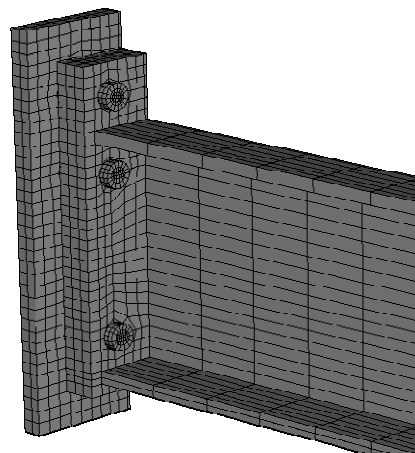
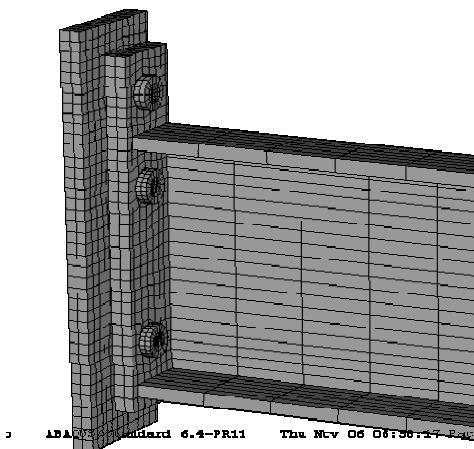


: ( ) :

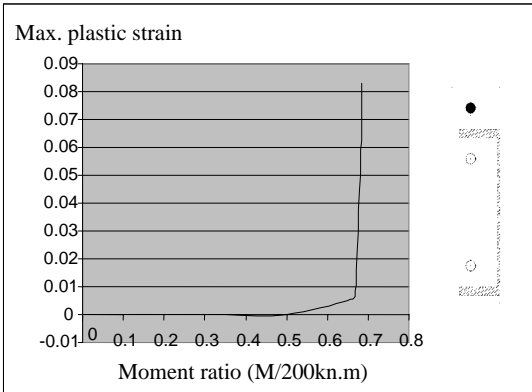
[ ] ct1b6 ct1a1 :

[ ] ct1b6 ct1a1 :

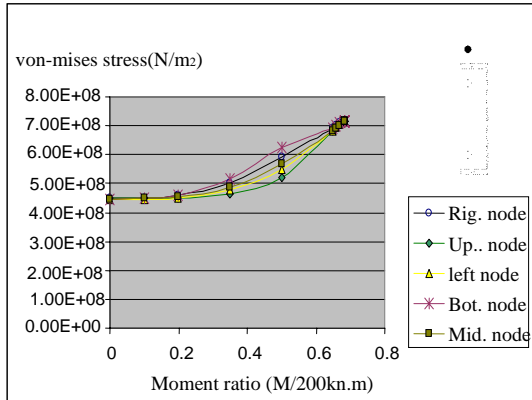
Mpl (Kn.m)	Mnp (Kn.m)	Ft (MPa)	dbolt (mm)	<u>bp (mm)</u>	tp (mm)	Fyp (MPa)	
/	/	/			/		ct1a1
/	/	/					ct1b6



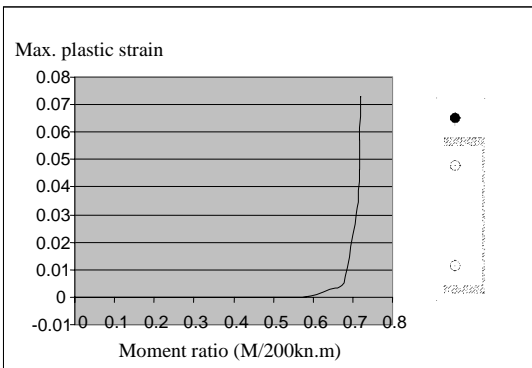
( ) ct1b6 ( ) ct1a1 :



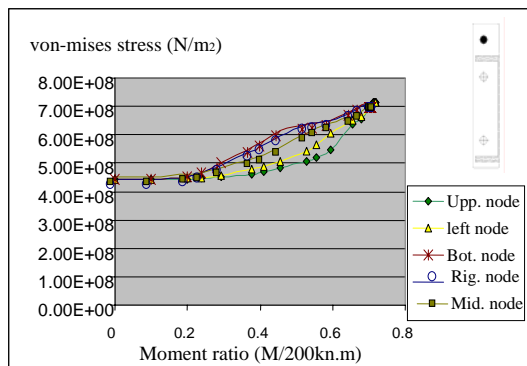
ct1a1



ct1a1



ct1b6



ct1b6

( ) ( )

( )

)

( ) ( )

ct1a1 . ct1b6 ct1a1

( )

.( )

( )

( ) ct1b6

( )

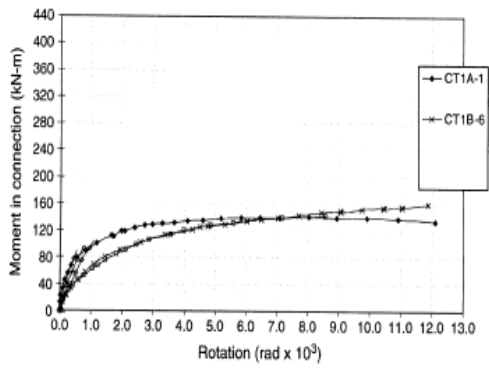
[ ]

ct1b6

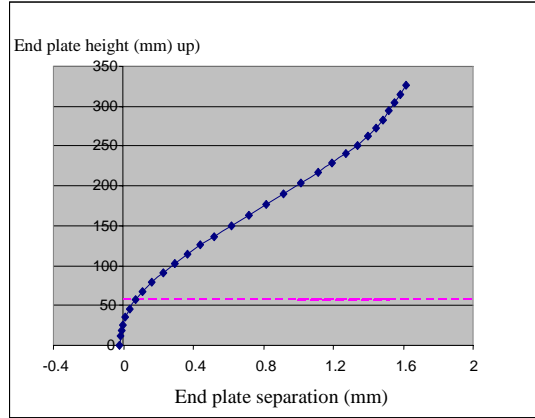
ct1a1

( )

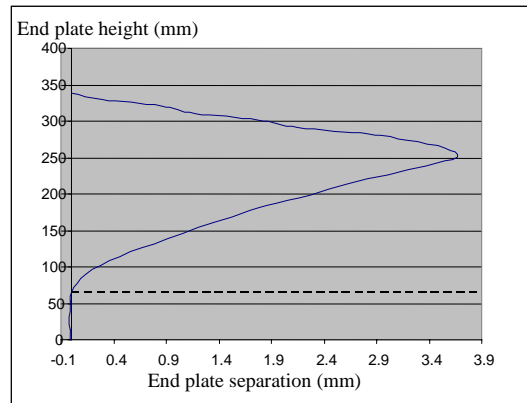
( )



[ ]

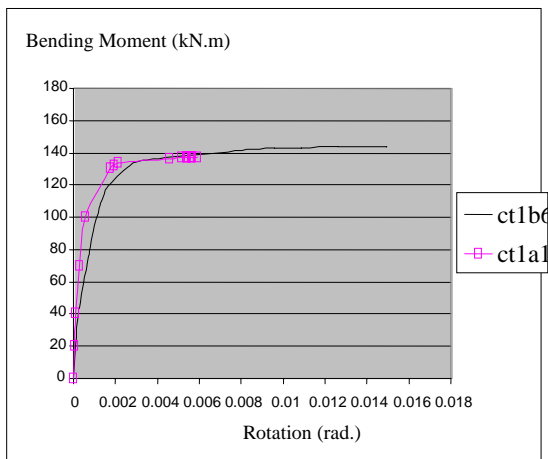


.ct1a1



.ct1b6

	Mu (Kn.m)	( )		
ct1a1	/	/	/	/
ct1b6		/	/	/



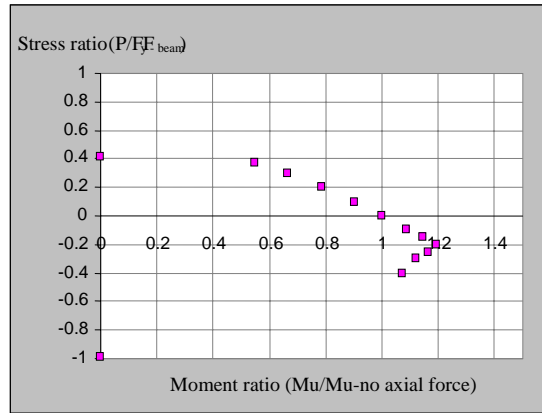
ct1b6 ct1a1

F<sub>y-beam</sub>

( )

( ) ( )

( ) ( )

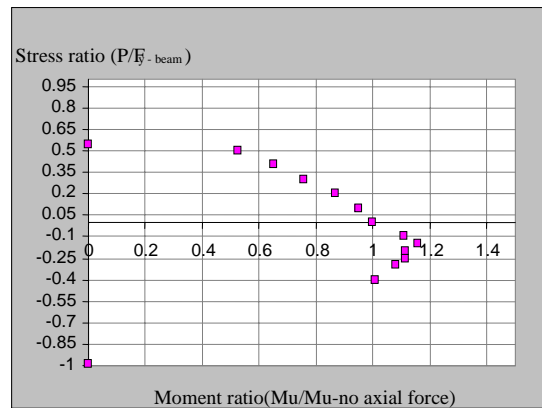


ct1b6

F<sub>y-beam</sub>

ct1a1

ct1a1



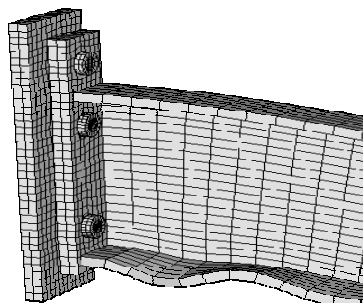
ct1b6

P= (MPa)

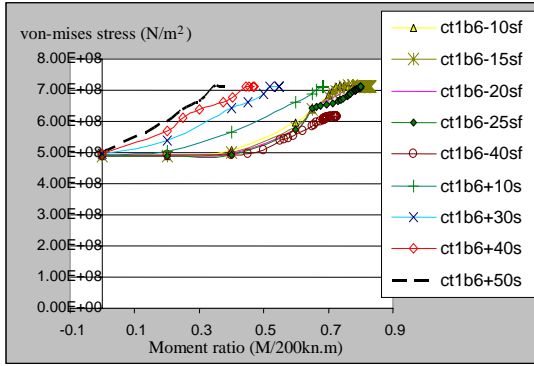
(P)

(F<sub>y-beam</sub>)

(M=0)



ct1b6



ct1b6

( )

( ) ( )

sf

( )

s

( )

/  $F_{y-beam}$  /  $F_{y-beam}$  /  $F_{y-beam}$

/  $F_{y-beam}$

( )

( )

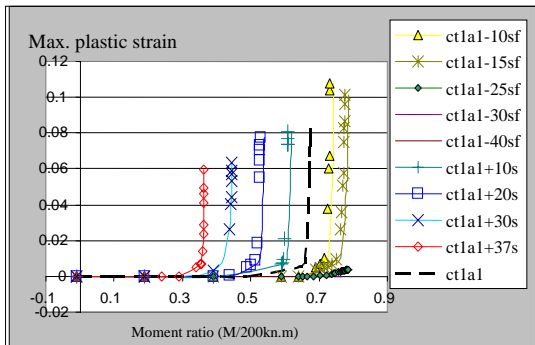
/  $F_{y-beam}$  /  $F_{y-beam}$

/  $F_{y-beam}$  /  $F_{y-beam}$

/  $F_{y-beam}$

( )

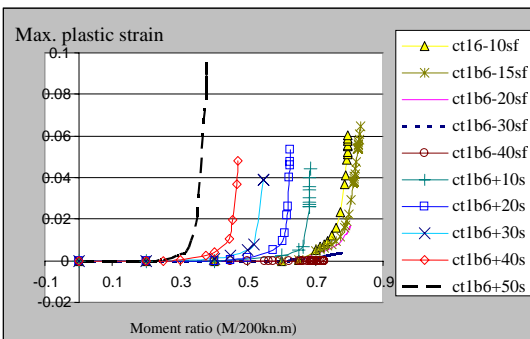
( )



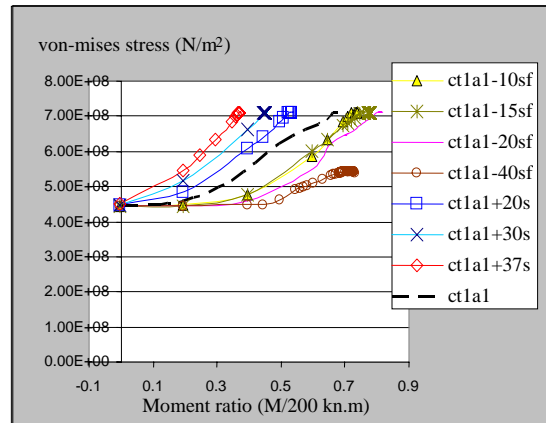
ct1a1

)

(



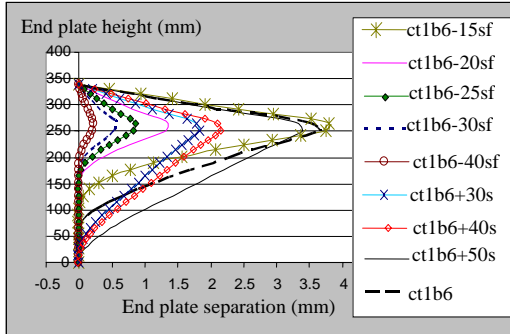
ct1b6



ct1a1



ct1b6 /  $F_{y\text{-beam}}$   
 /  $F_{y\text{-beam}}$

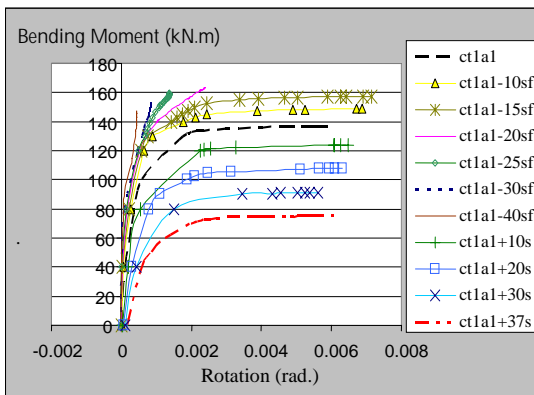


.ct1b6

( )

ct1a1

/  $F_{y\text{-beam}}$   
 ( )



.ct1a1

/  $F_{y\text{-beam}}$  /  $F_{y\text{-beam}}$

ct1a1

( ) ( )  
 /  $F_{y\text{-beam}}$

ct1a1

/  $F_{y\text{-beam}}$

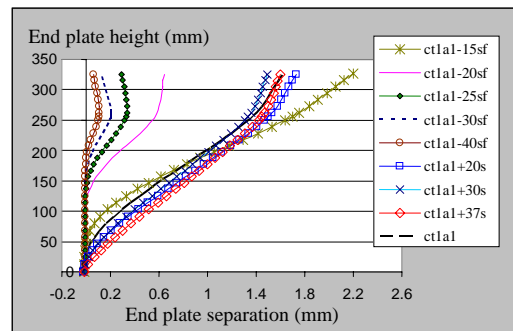
ct1b6

/  $F_{y\text{-beam}}$

/  $F_{y\text{-beam}}$

( ) ( )

ct1a1

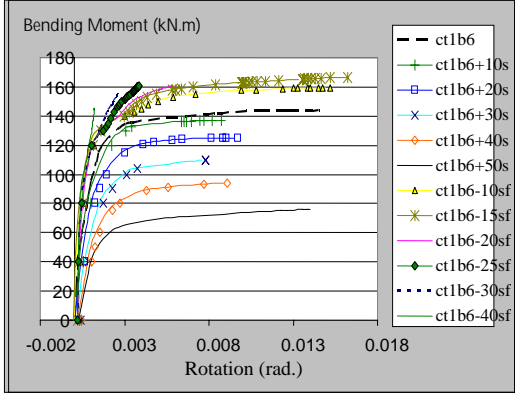


.ct1a1

/  $F_{y\text{-beam}}$

/ ( )

/  $F_{y\text{-beam}}$



ct1b6

ct1a1

( )

ct1a1

( )

ct1b6

ct1b6

( )

(Kn.m/rad)

ct1a1

	ct1a1	ct1a1-10sf	ct1a1-15sf	ct1a1-20sf	ct1a1-25sf	ct1a1-30sf
	/ x	/ x	/ x	/ x	/ x	/ x
	ct1a1-40sf	ct1a1+10s	ct1a1+20s	ct1a1+30s	ct1a1+37s	-
	/ x	/ x	/ x	/ x	/ x	

(Kn.m/rad)

ct1b6

	ct1b6	ct1b6-10sf	ct1b6-15sf	ct1b6-20sf	ct1b6-25sf	ct1b6-30sf
	/ x	/ x	/ x	/ x	/ x	/ x
	ct1b6-40sf	ct1b6+10s	ct1b6+20s	ct1b6+30s	ct1b6+40s	ct1b6+50s
	/ x	/ x	/ x	/ x	/ x	/ x

( )

%

- 1 - Krishnamurthy, N. and Graddy, D. E. (1976). "Correlation between 2- and 3-dimensional finite element analysis of steel bolted end-plate connections." *Computers and Structures*, Vol. 6, PP. 381-389.
- 2 - Ahuja, V, Kukreti, A. R. and Murray, T. M. (1982). "Analysis of stiffened end-plate connections using the finite element method." Research report No. *FSEL/MBMA 82-01*, *Fears Structural Engineering Laboratory*, School of Civil Engineering and Environmental Science, University of Oklahoma, Norman, Oklahoma.
- 3 - Ghassemieh, M., Kukreti, A. R. and Murray, T. M. (1983). "Inelastic finite element analysis of stiffened end-plate moment connections." *Research report No. FSEL/MBMA 83-02*, *Fears Structural Engineering Laboratory*, School of Civil Engineering and Environmental Science, University of Oklahoma, Norman, Oklahoma.
- 4 - Bahaari, M. R. and Sherbourne, A. N. (1994). "Computer modeling of an extended end-plate bolted connection." *Computer and Structures*, Vol. 52, PP. 879-893.
- 5 - Bose, B., Wang, Z. M. and Sarkar, S. (1997). "Finite element analysis of unstiffened flush end-plate bolted joints." *ASCE, Journal of Structural Engineering*, Vol. 123, PP. 1614-1621.
- 6 - Mays, T.W., (2000). "*Application of the finite element method to the seismic design and analysis of large moment end-plate connections*", Ph.D. Dissertation, Virginia Polytechnic Institute and State University, Blacksburg, Virginia.
- 7 - Ghassemieh, M. and Jalalpour, M. (2007). "Seismic behavior of steel extended end-plate moment connections." *Journal of University College of Engineering*, University of Tehran, Vol. 41, No. 1, PP. 103-116.

---

8 - Maggi, Y.I., Goncalves, R. M., Leon, R. T. and Ribeiro, L.F. L., (2004). "Parametric analysis of steel bolted end plate connections using finite element modeling." *Journal of Construction Steel Research*, Vol. 61, PP. 689-670.

- 1 - Prying Force
- 2 - Moment Ratio